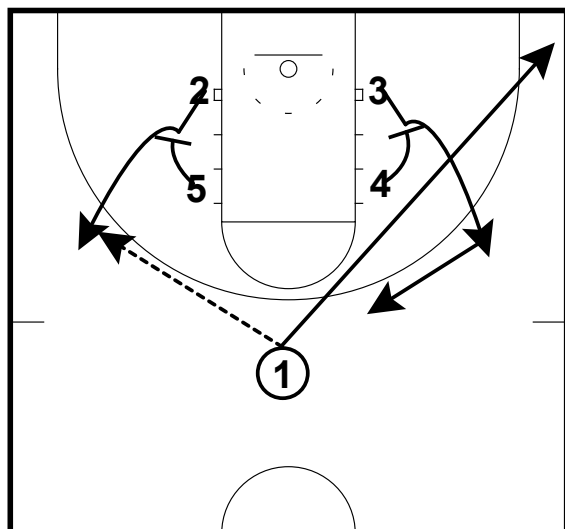


# Loyola

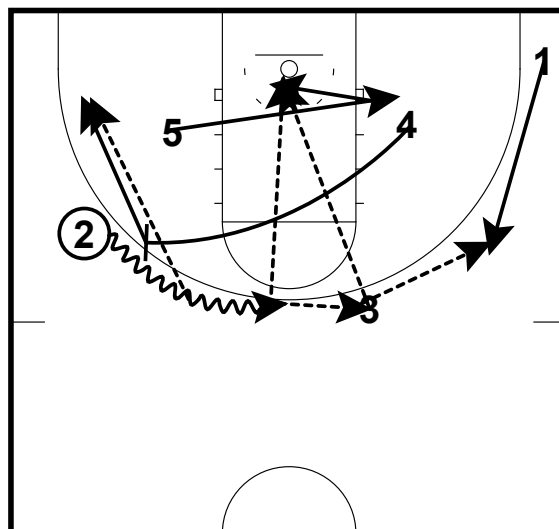
## BasketballHQ.com

Pin Down with Side Ball Screen & Hi-Low Action  
12-13 Loyola



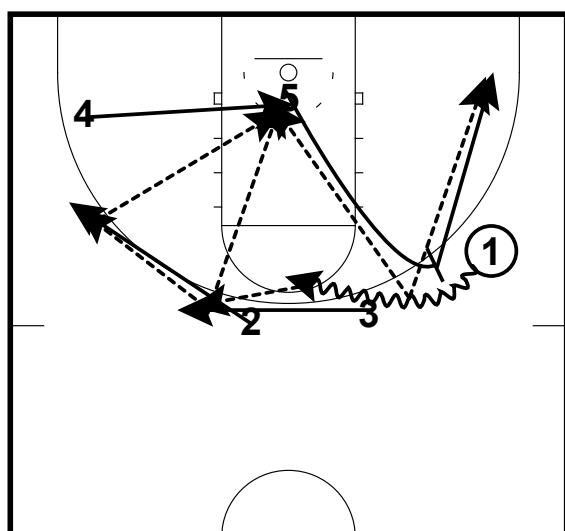
1. 2 & 3 cut off of pin downs from 5 & 4 to the wing.
2. 1 passes to 2 and cuts to the opposite corner
3. 3 cuts over to the lane line extended.

Pin Down with Side Ball Screen & Hi-Low Action  
12-13 Loyola



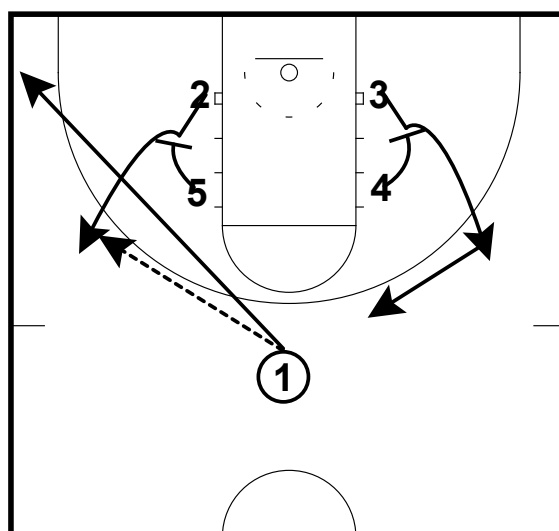
1. 4 sprints over to set 2 a side ball screen, 5 replaces 4.
2. 2 dribbles off of 4's ball screen and 5 ducks in.
3. 4 pops, 1 drifts up to the wing.
- Option 1 - 2 passes to 4 on the pick and pop.
- Option 2 - 2 passes to 5 posting up.
4. 2 passes to 3.
- Option 3 - 3 passes to 5 posting up.
5. 3 passes to 1.
- Option 6 - 1 passes to 5 posting up.

Pin Down with Side Ball Screen & Hi-Low Action  
12-13 Loyola



1. 5 sprints over to set 1 a side ball screen, 4 replaces 5.
2. 1 dribbles off of 5's ball screen and 4 ducks in.
3. 5 pops, 2 slides down to the wing.
- Option 1 - 1 passes to 5 on the pick and pop.
- Option 2 - 1 passes to 4 posting up.
4. 1 passes to 3.
- Option 3 - 3 passes to 4 posting up.
5. 3 passes to 2.
- Option 6 - 2 passes to 4 posting up.

Pin Down with Side Ball Screen & Hi-Low Action  
12-13 Loyola



- OPTION
1. 2 & 3 cut off of pin downs from 5 & 4 to the wing.
  2. 1 passes to 2 and cuts to the ball side corner.
  3. 3 cuts over to the lane line extended.